

Total Rated Load (kg)

Outriggers fully extended

Boom		Boom		Boom		Boom	
①、①+②		①+②+③		①+②+③+④		①+②+③+④+⑤	
4.075m boom		5.575m boom		7.075m boom		8.575m boom	
Working Radius (m)	T.Rated Load (kg)	Working Radius (m)	T.Rated Load (kg)	Working Radius (m)	T.Rated Load (kg)	Working Radius (m)	T.Rated Load (kg)
~1.4	2,820	~3.0	1,220	~3.6	820	~4.0	550
1.5	2,520	3.5	970	4.0	740	4.5	400
2.0	1,920	4.0	780	4.5	580	5.0	340
2.5	1,570	4.5	630	5.0	480	5.5	300
3.0	1,220	5.0	530	5.5	430	6.0	270
3.5	970	5.205	530	6.0	380	6.5	230
3.705	920			6.5	350	7.0	200
				6.705	330	7.5	180
						8.0	150
						8.205	150

Secondary Outriggers positions

Boom		Boom		Boom		Boom	
①、①+②		①+②+③		①+②+③+④		①+②+③+④+⑤	
4.075m boom		5.575m boom		7.075m boom		8.575m boom	
Working Radius (m)	T.Rated Load (kg)	Working Radius (m)	T.Rated Load (kg)	Working Radius (m)	T.Rated Load (kg)	Working Radius (m)	T.Rated Load (kg)
~1.4	1,720	~3.0	510	~3.6	400	~4.0	330
1.5	1,720	3.5	410	4.0	330	4.5	280
2.0	1,070	4.0	330	4.5	280	5.0	230
2.5	630	4.5	280	5.0	230	5.5	180
3.0	520	5.0	230	5.5	180	6.0	160
3.5	430	5.205	200	6.0	160	6.5	150
3.705	350			6.5	150	7.0	100
				6.705	140	7.5	80
						8.0	70
						8.205	60

☆Including 20 Kg hook weight
 ☆Boom deflection is not allowed for

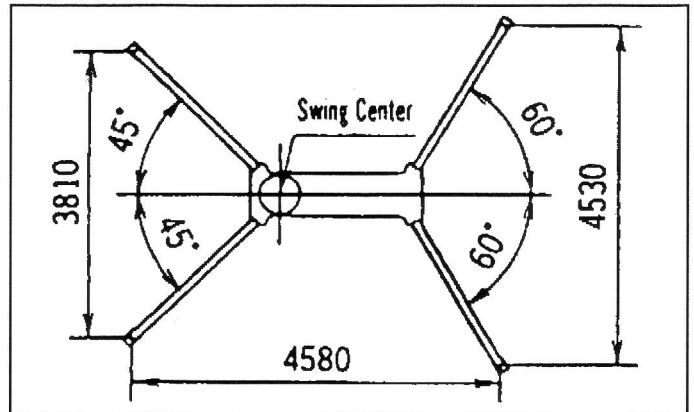


P.A. Construction Equipment Pty Ltd

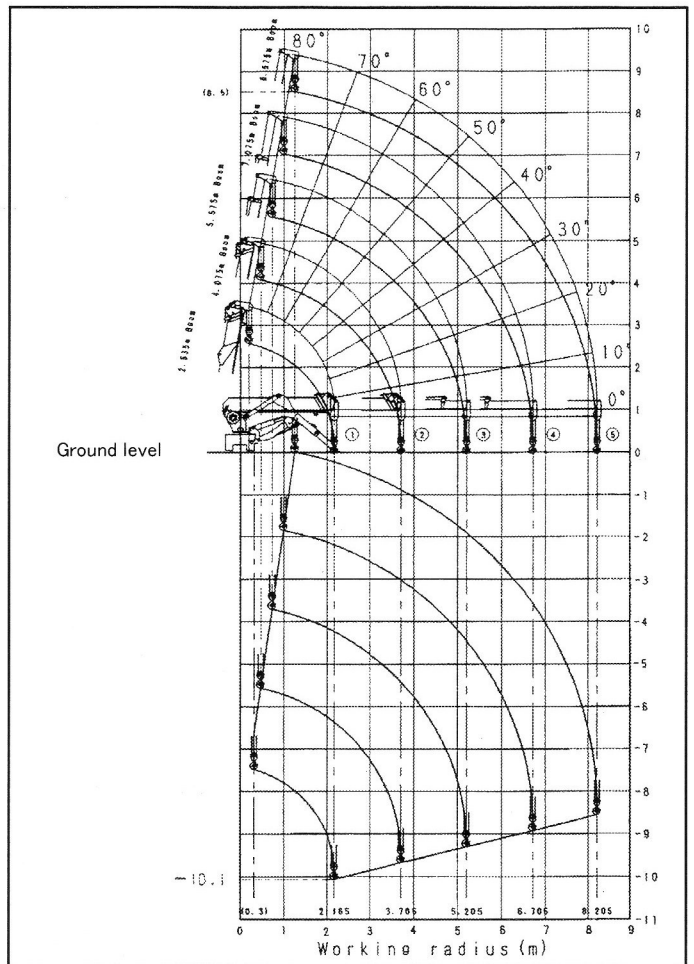
5-7 Lorraine Street, Peakhurst NSW 2210. PO Box 377, Mortdale NSW 2223, Australia.
 Phone (02) 9533 5411. Fax (02) 9533 5585. ABN 91 003 368 116

www.pacecranes.com.au

Outriggers Arrangement



Working Range



CAUTION: The working range chart applies to cases without load and do not include boom deflections.

MAEDA SEISAKUSHO CO., LTD.

Overseas Dept No.1095, Onbegawa, Shinonoi,

Nagano 388-8011 Japan

TEL:026-292-2228 FAX:026-293-5590

URL: http://www.maesei.co.jp/

E-mail: info@maesei.co.jp

Printed in japan 2003 09 ①