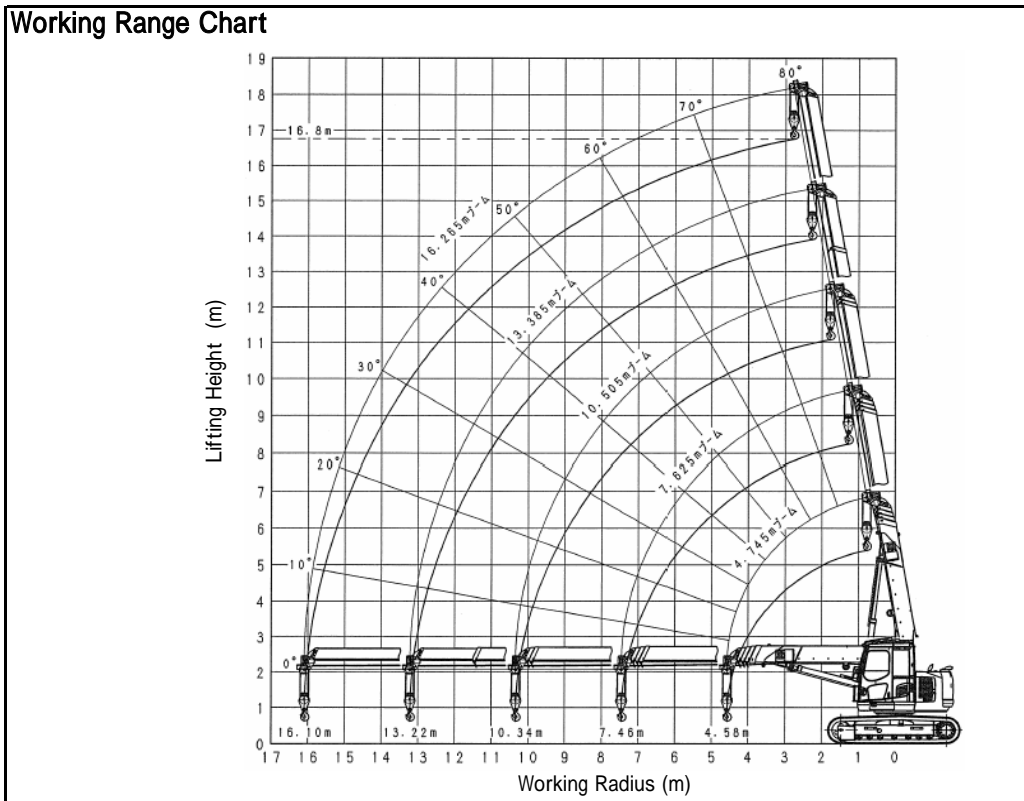


# MAEDA Crawler Crane LC1385M-8



The Working Range Chart does not take into account boom deflection under load.

## Total Rated Load Chart

unit : kg

Working radius(m)	4.745m Boom		7.625m Boom		10.505m Boom		13.385m Boom		16.265m Boom	
	Stationary	Pick & Carry	Stationary	Pick & Carry	Stationary	Pick & Carry	Stationary	Pick & Carry	Stationary	Pick & Carry
2.000	6000	2000	6000	2000	3000	1500				
2.500	6000	2000	6000	2000	3000	1500	3000			
2.600	6000	2000	6000	2000	3000	1500	3000			
3.000	5250	2000	5260	2000	3000	1500	3000		2600	
3.200	4910	2000	4920	2000	3000	1500	3000		2600	
3.500	4450	2000	4460	2000	3000	1500	3000		2600	
3.850	4000	2000	4000	2000	3000	1500	3000		2600	
4.000	3830	1915	3820	1910	3000	1500	3000		2600	
4.500	3320	1660	3310	1655	3000	1500	3000		2600	
5.000			2880	1440	2710	1355	2640		2600	
6.000			2210	1105	2140	1070	2100	Unusable	2080	
7.000			1720	860	1720	860	1710		1710	
7.500					1550	775	1560		1560	Unusable
8.000					1400	700	1430		1430	
9.000					1150	575	1200		1210	
10.000					940	470	1020		1040	
11.000							880		890	
12.000							750		770	
13.000							650		670	
14.000									580	
15.000									500	
16.000									440	
16.095									430	

\*The chart is based on the actual working radius including boom deflection..

December,25th,2007

\*The weight of hook block (standard 4 fall-90kg) must be included as part of the load shown in the chart..

\*The chart is subject to change without notice.

## MAEDA SEISAKUSHO CO., LTD.

Overseas Dept. No.1095, Onbegawa, Shinonoi,

Nagano 388-8522 Japan

TEL:026-292-2228 FAX:026-293-5590

URL : <http://www.maesei.co.jp/>

E-mail : [info@maesei.co.jp](mailto:info@maesei.co.jp)

