



180 E

*Ride on pick&carry crane
with 18.000 capacity*

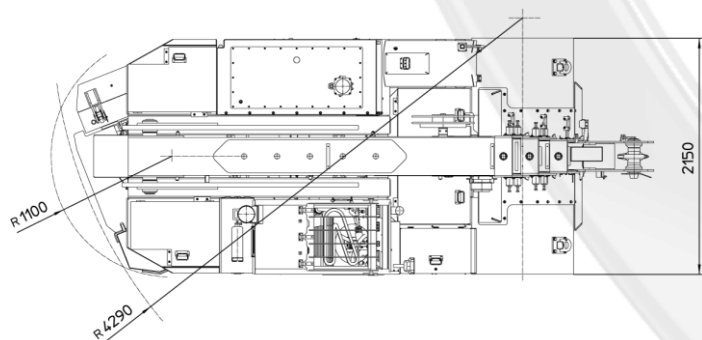
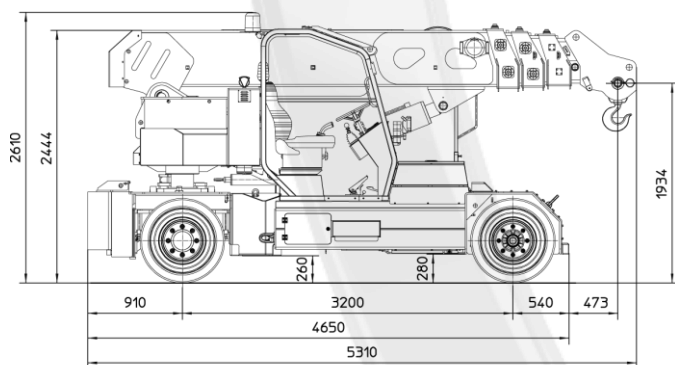
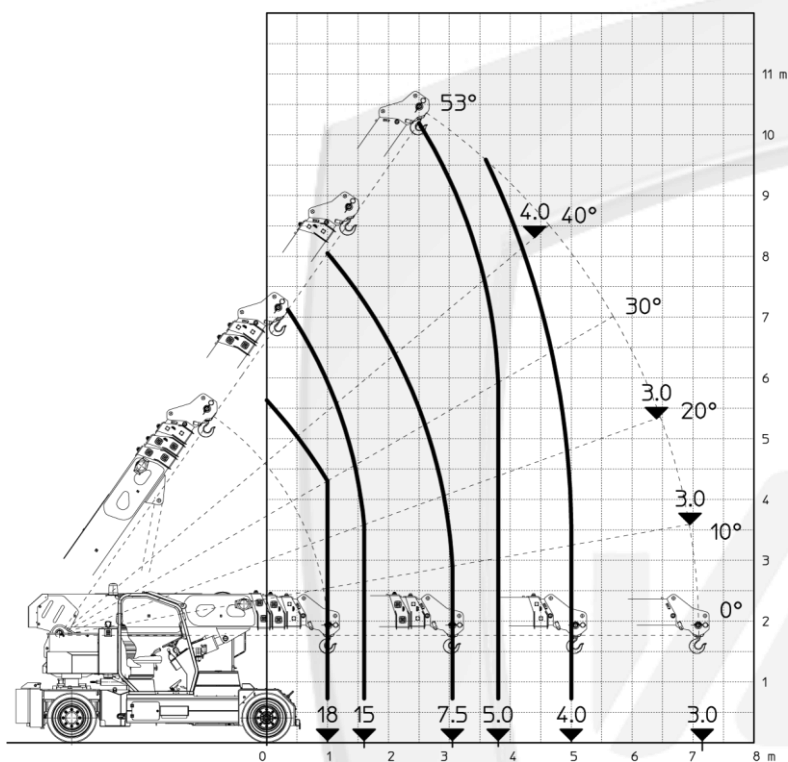


FEATURES

MAX CAPACITY 18.000 kg
MAX BOOM EXTENSION 7,15 m
MAX BOOM ANGLE 53°
MIN BOOM ANGLE 0 °
WEIGHT 19.000kg
REMOVABLE COUNTER 3..4500 kg
CONFORMITY 2006/42 CE;
2014/30 CE; 2014/35 CE;
2000/14 CE; EN 13000

| | |
|-------------------------|---|
| CHASSIS | 6 wheels structure made in high quality steel, with internal counterweights |
| WHEELS | Front: n°4 superelastic wheels 355/65 - R15" Rear: n°2 superelastic wheels 355/65 - R15" |
| TRACTION | Rear traction with differential axle with reduction gear, powered by electric motor AC – 20 kW controlled by inverter |
| HYDRAULIC SYSTEM | Powered by electric motor AC – 33 kW controlled by inverter |
| BRAKES | N°2 brake shoes on front axle N°2 brake shoes on rear axle |
| STEERING | Rear steering with hydraulic cylinder between chassis and traction group |
| BOOM | Manufactured in high quality steel, composed by four elements: main boom and three telescopic hydraulic sections |
| POWER SUPPLY | Electric |
| BATTERY | 96V - 1036 Ah |
| BOOM'S CONTROL | By electro-hydraulic joystick inside the cabin |
| DRIVE CONTROL | By pedals and steering wheel inside the cabin |
| SAFETY SYSTEM | Electronic load moment indicator (LMI) with display for load, boom's position and boom's angle control |
| OPTIONALS | Hydraulic winch, manual Jib, hydraulic Jib, radio remote control, non marking wheels, chain hoist, self levelling hydraulic forks, battery watering system, on board battery charger, carry deck, closed cabin. |

All specifications are subject to change. Consult Valla for latest specifications



Removable ballasts to make it easier to transport the crane



Optional on board battery charger



Optional proportional boom

Valla
MANITEX

VALLA MANITEX SRL
Via Leonardo da Vinci 12
29016 - Cortemaggiore (PC) - ITALY

PHONE: +39 0523 256411
EMAIL: info@valla.com
SITE: www.valla.com