


Electric battery operated Arm Lift Mobile Crane Max. Capacity **Kg. 3.500**



	
OUTREACH (mm)	CAPACITY (kg)
1.000	1.900
3.000	600
4.700	300

TECHNICAL DATA

CRANE FRAME: Five-wheels frame fabricated from preformed and welded steel plate with built-in counterweight.

TRACTION: by AC 3,5 kw 24V reversible electric motor, controlled by inverter, electro magnetic control on disk brake.

BATTERY: 24V 516Ah battery, battery meter on dashboard.

DRIVE: by 180° steering bar. Complete with safety device on reverse.

WHEELS: Rear: Nr. 1 cushion 343x140; Front Nr. 4 superelastic 15 x 4 ½ R8”.

BOOM: 5 sections boom: 1 fixed, 2 hydraulically telescopic, 2 manually telescopic fitted with nylon wear pads. Adjustable wear pads on the sides.

BOOM CONTROL: Distributor by proportional levers.

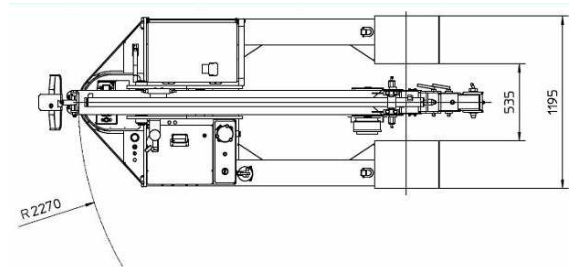
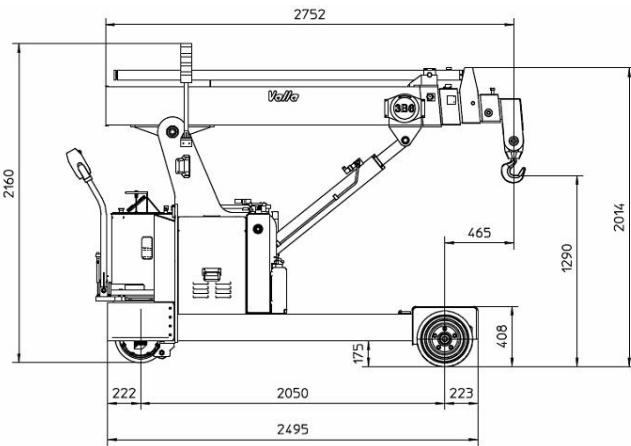
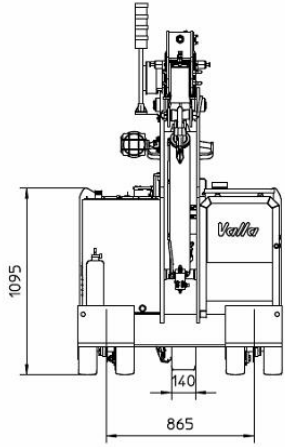
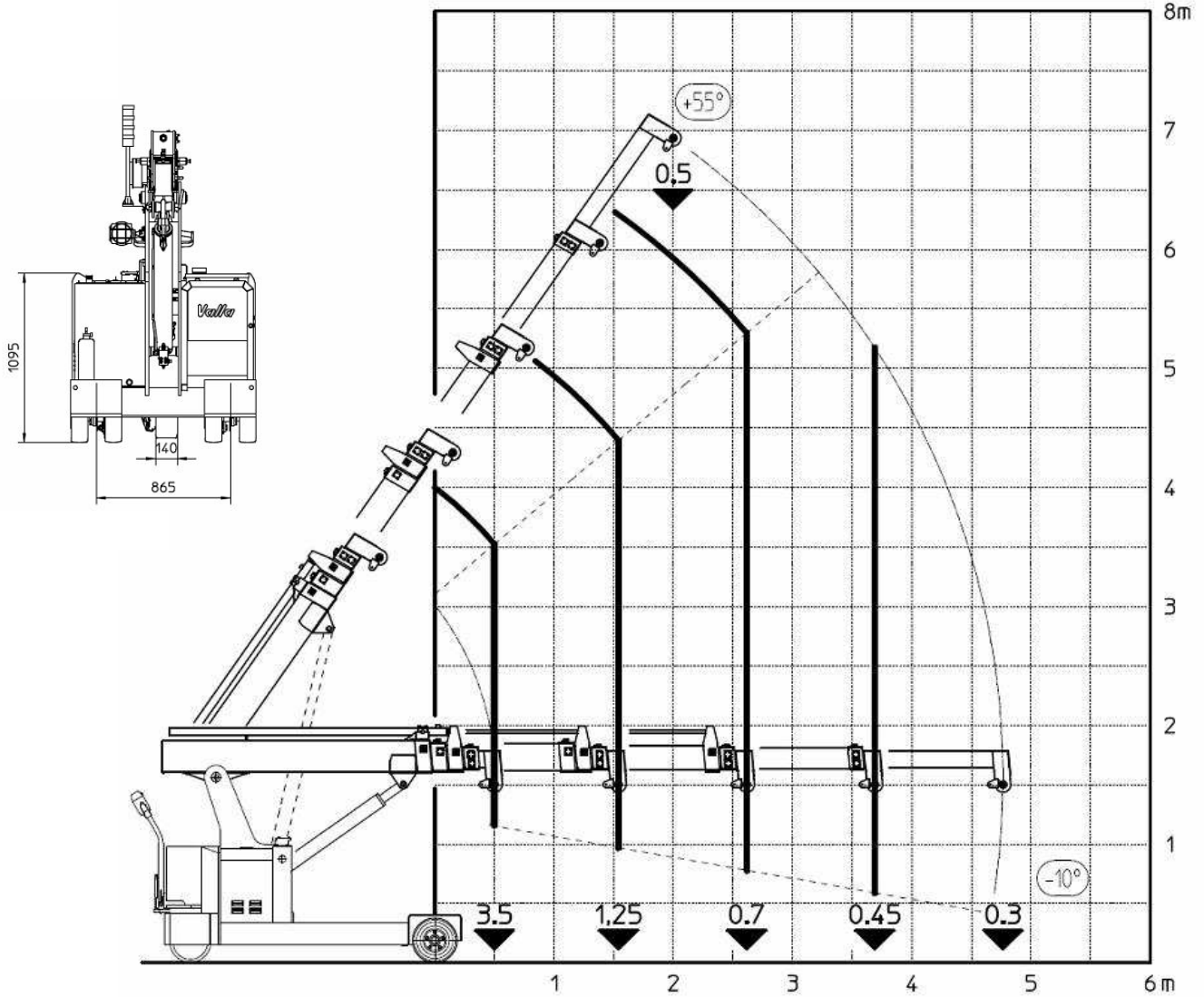
LMI: Electronic Load Moment Indicator. Display showing lifted load, max allowed load, tilting percentage, operating radius, angle, telescope and light indicators on the operative mode.

TOTAL WEIGHT: approx. kg. 2.400 nearly **MAX. CAPACITY:** kg. 3.500

Options on request: Brakes on front wheels, hydraulic winch; chain hoists; carry-deck; battery charger (on board and stand-alone); manual and hydraulic jibs; cable remote control; radio remote control; working light; fire extinguisher.



The VALLA mobile crane mod. 30 EVO complies with the following standards:
 -2006/42/CE
 -UNIEN13000
 -I.S.P.E.S.L.



Data subject to be changed without any previous notice. Pictures may differ from technical description.