

TRACKED CARRIERS

700

R
PRO



The 700 series from Tracked Carriers is incredibly compact, enabling access to the most restricted sites. Whilst only 600mm wide, the 700 R and 700 PRO models have a generous maximum capacity of 700kg and all the features of the larger models.

Tracked Carriers **R** models use state-of-the-art technology whilst being simple to operate, reliable and easy to maintain.

PRO models offer increased features such as gradient-monitoring, information feedback and a smart auxiliary output, ideal when increased safety measures are required or powered attachments make the job easier.

FEATURES

R
MODEL

PRO
MODEL

Efficient direct AC electric drive	●	●
Fully proportional remote control	●	●
Maintenance free AGM batteries	●	●
Hazard lights front and rear	●	●
Switchable motion alarm	●	●
On board diagnostics	●	●
Adaptable and extendable platform	●	●
LCD information screen on remote control	—	●
Smart auxiliary output socket	—	●
Automatic gradient/speed monitoring	—	●
Non-marking tracks	○	○
Wide range of attachments	○	○

○ = Optional ● = As Standard

CAPACITIES

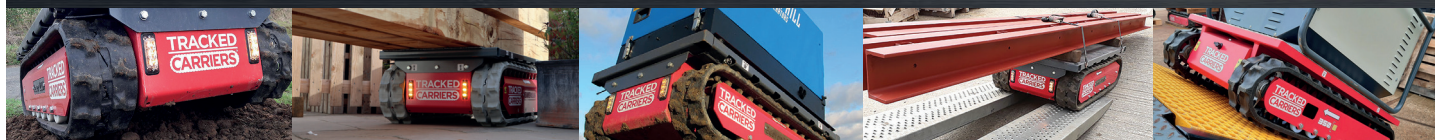
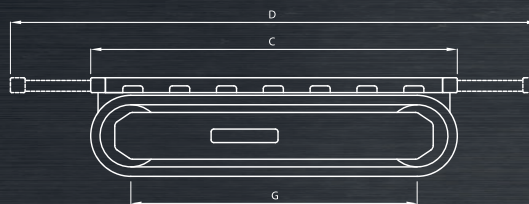
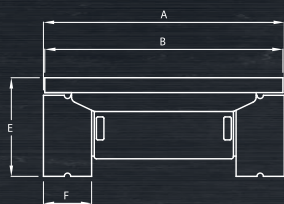
Max capacity on level ground	700kg
Max capacity at max gradient	175kg
Max gradient	45°
Max side slope	30°
Max speed	3.5km/h
Unladen weight	250kg

POWER

Power (max)	2.2kW
Voltage	24V
Battery capacity	95Ah
Charger input	110V-230V

DIMENSIONS

Width overall (A)	600mm
Width of bed (B)	590mm
Length of bed/overall (C)	1050mm
Length extended (D)	1600mm
Height (E)	355mm
Track width (F)	130mm
Track length on ground (G)	760mm
Ground clearance (centre)	55mm



Contact Us: Tracked Carriers Ltd. The Forge, 154 Maldon Road, Tiptree, Essex CO5 0PH
Telephone: +44 (0)1621 810999 **E-mail:** info@trackedcarriers.co.uk **Web:** www.trackedcarriers.co.uk