

MANITEX VALLA 90 E



Electric battery operated Arm Lift Mobile Crane Max. Capacity **kg. 9.000**



Valla	
OUT REACH (mm)	CAPACITY (kg)
2.000	5.900
3.000	3.500
5.000	2.000

TECHNICAL DATA

CRANE FRAME: Six-wheele frame fabricated from preformed and welded steel plate with built-in counterweight.

TRACTION: by DC 14 kw 48V reversible electric motor, controlled by inverter, electro magnetic control on disk brake.

BATTERY: 48V 700Ah battery, battery meter on dashboard.

BRAKES: foot hydraulically operated brakes (disc on front, drums on rear wheels). Parking hand brake mechanically operated.

SUSPENSION: oscillating rear axle with mechanical lock.

STEERING: power steering with hydraulic cylinder and 140° articulation. Safety valves and filter.

WHEELS: Nr. 2 rear pneumatic 23 x 9 R10" - Nr. 4 front superelastic 23 x 10-12"

BOOM: boom fabricated from preformed and welded quality steel plate. Nr.4 telescoping sections: 1 fixed; 3 hydraulically telescoping. Fitted with nylon wear pads adjustable wear pads on the sides.

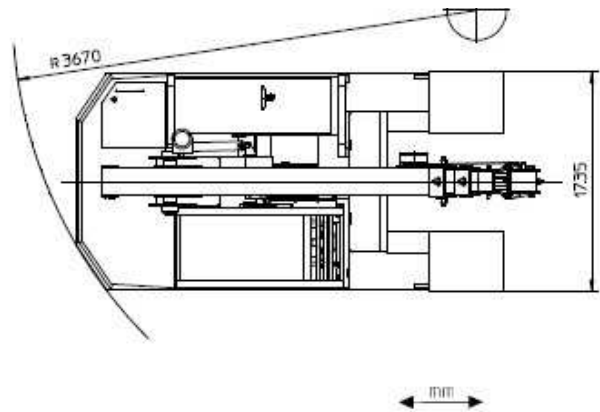
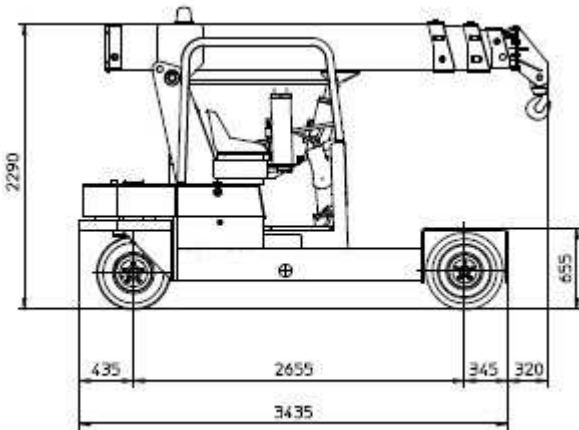
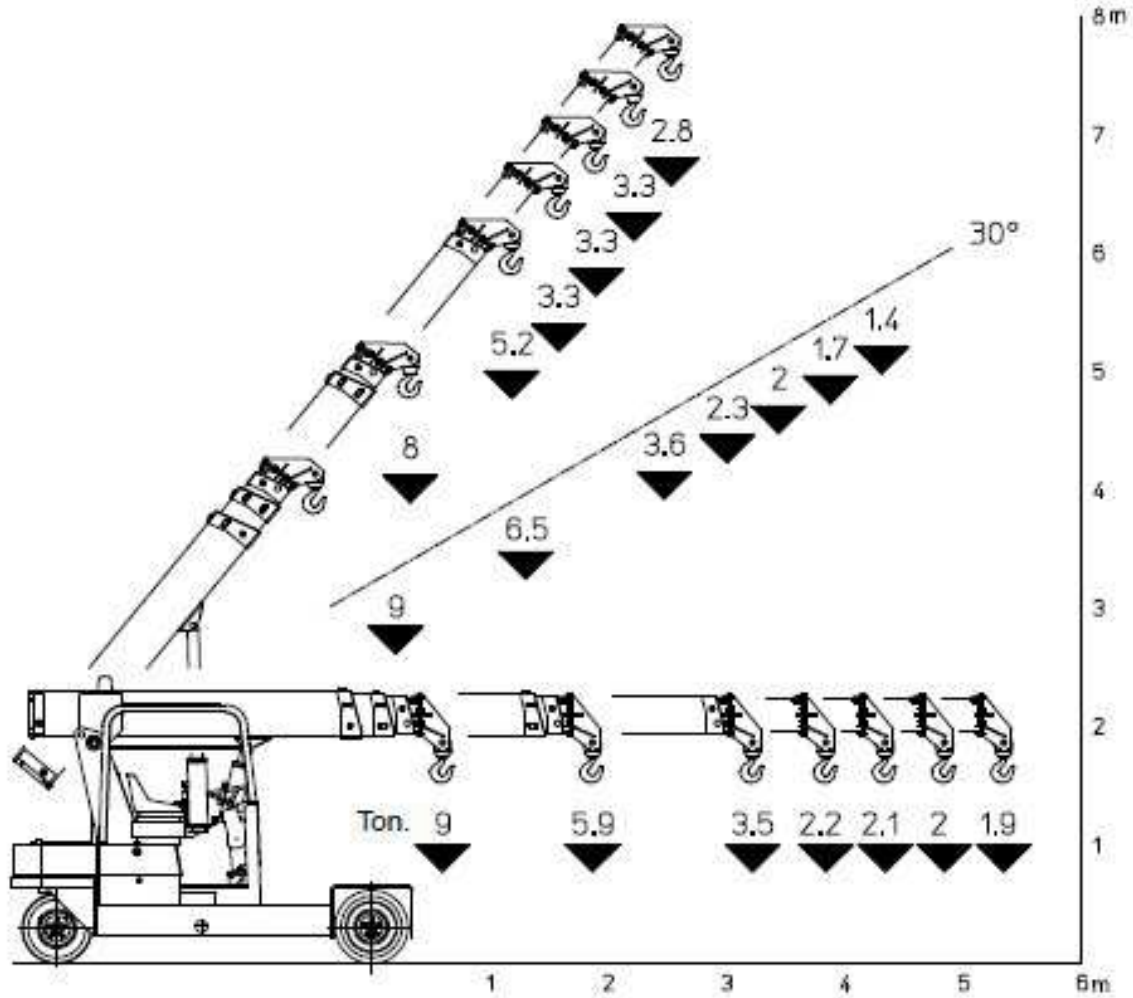
BOOM CONTROL: Distributor by proportional levers. Motor driven pump 5kW 48V.

LMI: Electronic Load Moment Indicator. Display showing lifted load, max allowed load, tilting percentage, operating radius, angle, telescope and light indicators on the operative mode.

TOTAL WEIGHT: approx. kg. 6.100 **MAX. CAPACITY:** kg. 9.000

Options on request: hydraulic winch; chain hoists; carry-deck; battery charger (on board and stand-alone); manual and hydraulic jibs; cable remote control; radio remote control; working light; fire extinguisher.





Data subject to be changed without any previous notice. Pictures may differ from technical description.