

# Glassworker GW 625-2

The strongest off-road glass lifter of its class

GW 625-2

Order No.: 106499



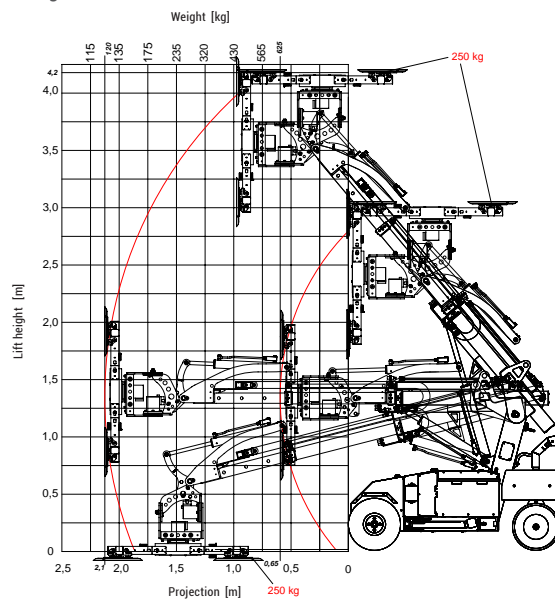
- » Lifting capacity max. 625 kg
- » Max. lifting height (vertical) 3,10 m/3,60 m „Highlifter“
- » Max. lifting height (overhead) 3,60 m/4,35 m „Highlifter“
- » Individual arrangement of the suction cups
- » Hydraulic rotator as a standard feature
- » Standard wireless remote control for boom and suction disc movements
- » Self monitoring system

TECHNICAL DATA	
<b>Lifting capacity</b>	max. 625 kg
<b>Total Weight</b>	950 kg to 1050 kg depending on the version
<b>Total height</b>	1660 mm
<b>Total width</b>	830 mm
<b>Total length</b>	1930 mm
<b>Tilting of the suction disc</b>	95° forward 69° backwards
<b>Side offset</b>	50 mm in both directions
<b>Chargin Voltage</b>	230 Volt
<b>Batteries</b>	24 V / 2x 150 Ah
<b>Front wheel drive</b>	2000 Watt
<b>Vacuum system</b>	2-circuit-system
<b>Suction cups</b>	6 x Ø 350 mm
<b>Turning circle at steering angle of 80°</b>	3.8 m
<b>Rotation of the vacuum cross</b>	95° in both directions
<b>Optional</b>	Rotation Head for moving the suction disc by 95 degrees in both directions; Rotation Head for lateral moving of the suction disc; manual extension „highlifter“; non-marking full rubber tires; black puncture-free tires

Standard wireless remote control



Diagram



You can find many helpful videos on our YouTube channel.

