



MK3053C

New MK Series Model *Technology In Motion*

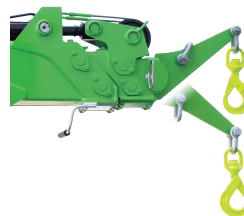
Fully Proportional Radio Remote Control
Automatic & Stepless Multi Outrigger Setting
Variable Crawler Gauge
Main Boom with 4 Falls Hook Mode
Diesel / Electric / Battery spec
Negative Angle Jib (Detachable)



Crane Capacity	Max. Working Radius	Max. Lifting Height
2.98t × 1.8m (1.0t x 5.2m with Jib)	14.3m	16.95m



Fully Proportional Radio Remote Control



2-ways Jib Head Position



Variable Crawler Gauge

New MK Series Model

MK3053C



Specifications

Model			MK3053C	
Crane capacity Main boom / Jib			2.98t x 1.8m / 1.0t x 5.2m	
Max. working radius Main boom / Jib			9.4m / 14.3m	
Max.lifting height (on the ground) Main boom / Jib			12.0m / 16.95m	
Boom	Telescopic system	Type	Fully automatic 5-section pentagonal telescopic boom	
		Boom length	3.1m - 10.3m	
		Boom telescoping stroke / time	7.2m / 59sec	
	Boom hoist system	Hoist angle / time	0 to 85deg / 26sec	
Jib	Telescopic system	Type	Fully automatic 3-section pentagonal telescopic jib	
		Jib length	2.3m - 4.8m	
		Jib telescoping stroke / time	2.5m / 18.6sec	
	Jib hoist system	Hoist angle / time	195deg / 17.5sec	
Slew system		Slew angle / time	360deg / 1.1rpm	
Winch system		Hook speed	37.5m/min (4 layers, single fall)	
Outrigger system	Type	Hydraulic cylinder direct acting type		
	Max.extended width	(Lateral) 4,546 × (Front) 4,557 × (Rear) 4,335mm		
	Extended postion	Multi (stepless)		
Travel system	Type	Hydraulic motor driven , stepless speed changer		
	Travel speed	0 - 2.4km/h		
	Gradability STD / WIDE	17.5deg / 24.7deg		
	Crawler ground length x width	950mm x 180mm		
	Gauge width	780mm - 1,050mm		
Engine (Diesel / Diesel + Electric)	Ground pressure	83.4kpa [0.85kgf/cm ²]		
	Model	KUBOTA Z482-E4B		
	Displacement	0.479L [479cc]		
	Rated output	7.2kw/2,600min ⁻¹ [9.8ps/2,600rpm]		
Electric Motor (Diesel + Electric)	Fuel	Diesel		
	Motor type	Totally enclosed fan-cooled motor 4.0kw, 4P 380V(200-415V)		
Battery system (Battery spec)	Type	Lithium Titanate Battery		
	5-hour rate capacity	DC55V-135Ah, 7.4kWh		
	Input Voltage / current	Single phase AC200V/16A, AC100V/14A		
	Charging time	with AC-200V	80%:2h20min / 100%:3h30min	
		with AC-100V	80%:5h20min / 100%:7h00min	
	Operating time	Up to a full working day if charged during operation		
Charging during operation		Available		
Remote control system	Type	Paddle type radio & Proportional control		
Overall length × width × height			3,195mm x 780mm x 1,945mm	
Machine weight (Diesel + Electric / Diesel, Battery)			2,900kg / 2,880kg	
Optional equipment			4 falls Hook block, EBU075, Black or White rubber tracks (depends on spec)	

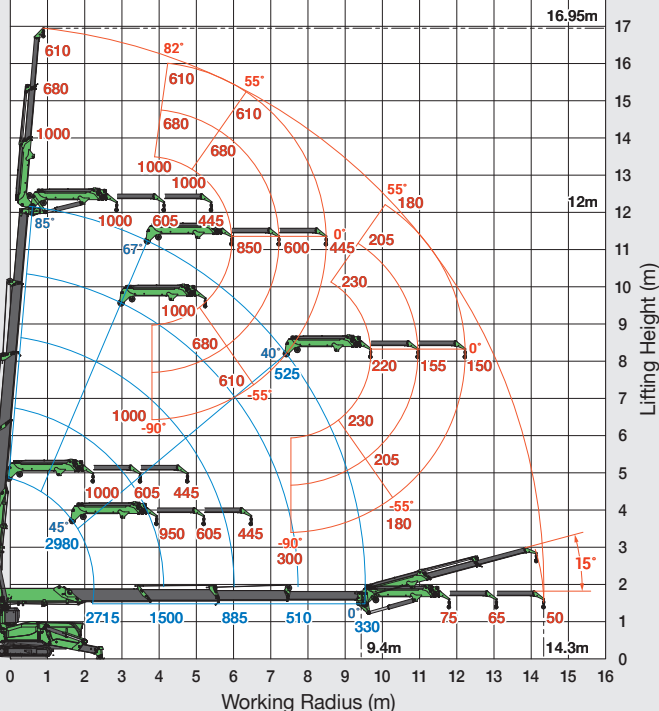


Automatic & Stepless Multi Outrigger Setting

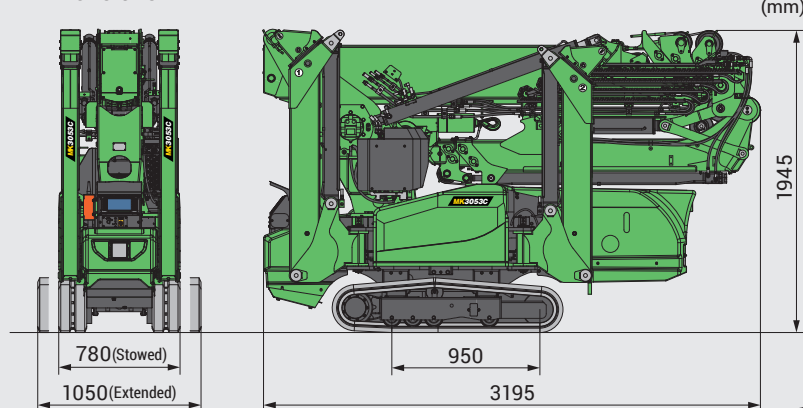
Working Range Chart

Outriggers Position : Max.

Main Boom (4 falls) Jib (Fixed Hook : Max.950kg / Single Fall : Max.1000kg) (kg)



Dimensions



Before use, please read the Operation Manual

* Due to improvements, the specifications are subject to change without notice.



MAEDA SEISAKUSHO CO., LTD.

Head office

No.1095, Onbegawa, Shinonoi, Nagano-City, Nagano-Pref. 388-8522 Japan

TEL.+81(0)26 292 2230 FAX.+81(0)26 293 5590

URL : www.maeda-minicranes.com E-mail : contact@maeda-minicranes.com

