



Up to 90% load envelope increase compared to the standard load chart with two options in use.

Up to 10% SWL increase when stabilizer bar is in use.

Always ready for travelling thanks to the Extensible Crane Wheelbase.

Low maintenance (no chains / no ropes).

High optional flexibility. Load Chart envelope enhancer options allow up to 2 out of 3 among: extensible wheel base, stabilizer bar, increased counterweights.

WHEELS

Front: n°2 250-15"
Rear: n°2 23x9 -10"

TRACTION

2x4,2kW electric motor on front side

HYDRAULIC SYSTEM

Powered with 12kW AC electric motor

BRAKES

Electric and hydraulic powered negative brakes

STEERING

Couple rear slewing idle wheels

BATTERY

80V, 560Ah with automatic water refill system

BATTERY CHARGER

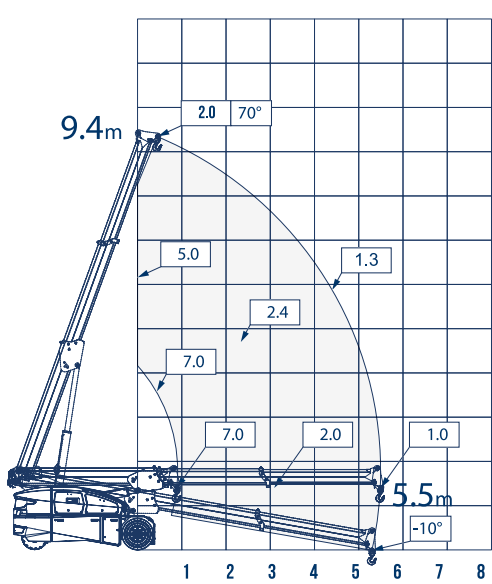
On board

OPTIONALS

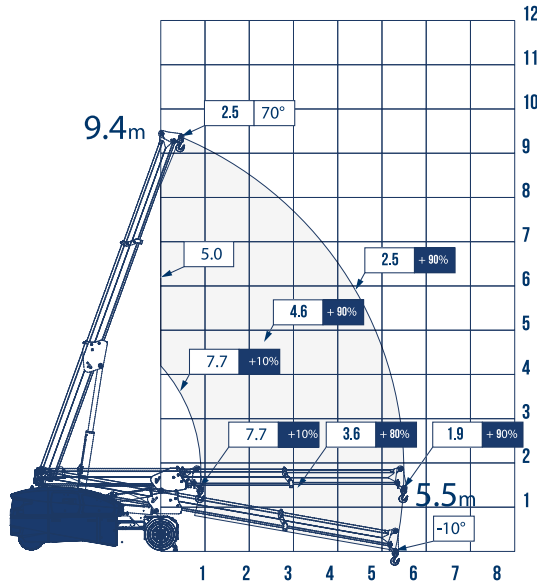
Hydraulic winch, manual jib, hydraulic jib, self levelling forks, non marking wheels

FEATURES

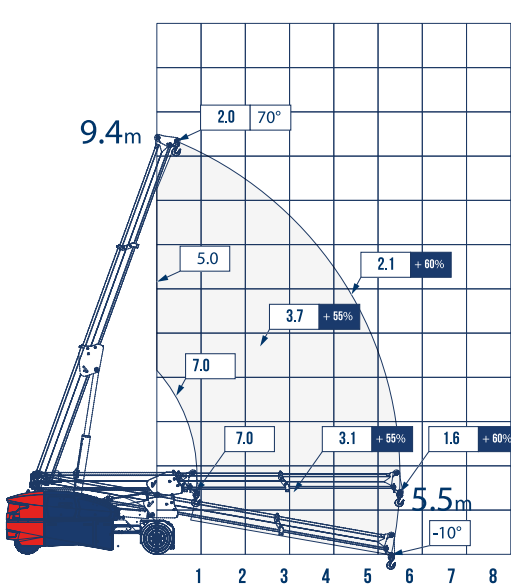
MAX. CAPACITY	7.000 kg / 7.700 kg (Crossbars)
MAX. BOOM EXTENSION	5,5 m
MAX. BOOM ANGLE	70 °
MIN. BOOM ANGLE	-10°
WEIGHT	7.500 kg
REMOVABLE BALLAST	2x900 kg / 2x1300 kg (Heavy)
CONFORMITY	2006/42 CE; EN 13000



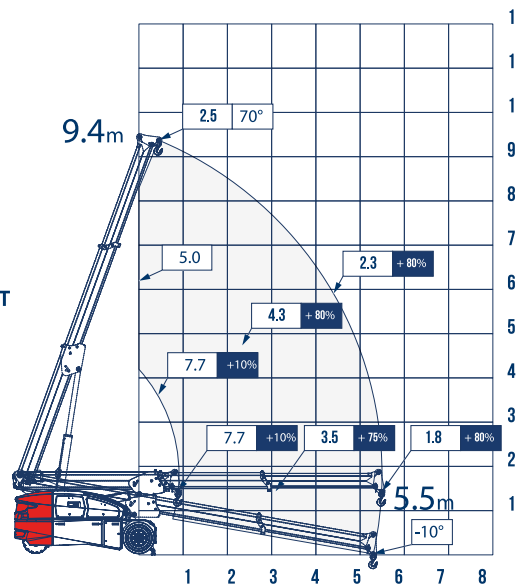
BASIC



LONG WHEELBASE + STABILIZER



HEAVIER BALLAST + LONG WHEELBASE



HEAVIER BALLAST + STABILIZER

