

MAEDA'S TECHNOLOGY IN MOTION

The first shipment of Maeda's MK3053C knuckle boom mini crawlers recently arrived in the Sydney yard of Pace Cranes. Featuring 12 meters of main boom, just under 17m with the hydraulic jib, and a lifting capacity of 2.98t tonnes, Michael Cawston, National Sales Manager Pace Cranes explains more.

THE MAEDA KNUCKLE BOOM MODEL

has been several years in design and development says Michael.

"Maeda has actually had a knuckle boom machine for approximately 10 years, and it proved to be quite successful Europe. It has taken Maeda some time to fully develop this machine to get the best possible reach and lifting capacity," he said.

The MK3053C features a telescopic boom with a knuckle that folds out from underneath the main boom. The knuckle features a telescoping luffing with a telescoping jib attached. The 12m main boom features four falls hook mode as well as a detachable negative angle jib. The model also features automatic and stepless multi outrigger settings, variable crawler gauge, diesel/electric and battery electric options as well fully proportional radio remote control.

"Maeda have designed this model like the other machines in the range and offer a standard diesel engine

option, diesel-electric or full battery lithium-powered for those companies wanting a 100 percent 'green machine'. The battery-powered option is designed to work a full day, but it has the capability of running from the mains for unlimited working hours," said Michael.

"Maeda displayed a prototype of the MK3053C at Bauma three and a half years ago and it was well received. At Bauma the European dealer sold numerous units and we've been pretty successful here having sold multiple units prior to arrival," he said.

Michael goes on to discuss applications the MK3053C is typically suited to.

"The applications are going to be similar to those where you will typically find our spider cranes. These include glazing application, getting product up to balconies and pushing them through windows. Lifts can be air conditioners, benchtops, glass, fish tanks, safes, anything you need to lift up and over and then push into an area where your traditional straight boom can't reach," he said.

"Enquiries have come from a whole range of interested parties including 'one-man band' glass installers up to the big crane hire companies. I'll say it now, there's more to the MK3053C when compared to a traditional Maeda spider crane and it will likely a specialist operator to manage the machine.

"Some customers that have a small MC285 and an MC305 have said the MK3053C can pretty much replace those models. Sure, this model is a little more expensive, but it's cheaper than having two cranes to manage multiple applications. We believe steel erectors will love this machine. It's a very compact machine with a smaller setup area than the 285 but you can lift more than a 305 with the main boom. It's a game changer for us," said Michael.

The jib is very simple to operate and



Hayden Roper, Cranes 4 Hire with Michael Cawston Pace Cranes.

Image: Maeda and Prime Creative Media

The MK3053C features the next generation of outriggers which are stepless meaning there's no pinning system.



Everything on the MK3053C is remote controlled, which comes as standard



The MK3053C features an expandable undercarriage for the stability of the machine, but the undercarriage also retracts enabling the machine to fit through doorway access.

easy, it's a one-man operation to take on and off and all functions are remotely controlled says Michael.

"Depending on what you're lifting, you might need the winch application. You can pre-rig the jib with the single fall hook fitted and then pull the boom out and you're ready to go. Or you can take the jib off depending on what is required.

"Everything is remote controlled, which comes as standard. The

MK3053C features an expandable undercarriage for the stability of the machine, but the undercarriage also retracts enabling the machine to fit through doorway access.

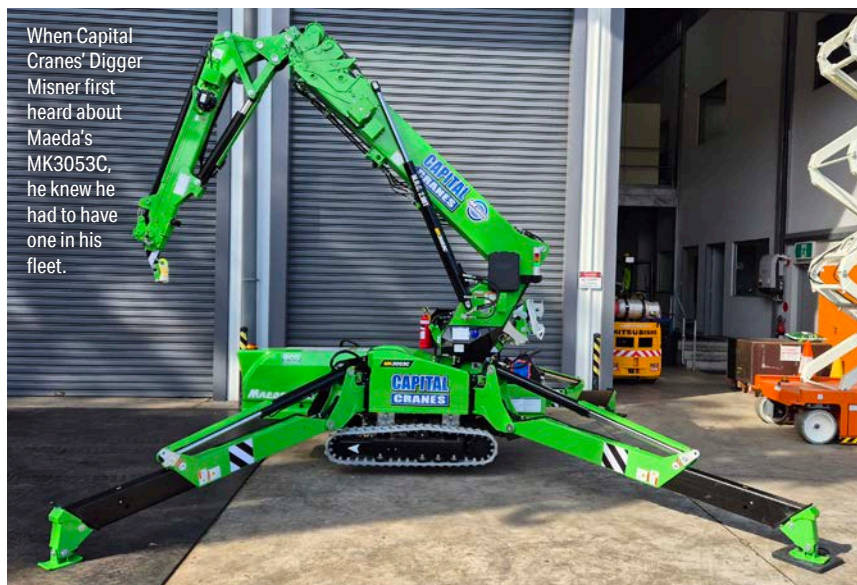
"The MK3053C features the next generation of outriggers which are stepless meaning there's no pinning system. If there is an obstacle in the way, you can stop the outriggers at any angle and the machine automatically sets up the load chart to suit," said

Michael.

"The controls feature a one touch setup, and from one button you can completely set the machine up. It swings the outriggers, extends them and puts them down, and it also self-levels the machine which is pretty exciting.

"The load charts are set up to work at multiple angles, and the LMI will read that setup and be tell the operator before the lift what you're good for and





When Capital Cranes' Digger Misner first heard about Maeda's MK3053C, he knew he had to have one in his fleet.

Cranes and the ensuing conversation led me to the Maeda MK3053C.

"They informed me that Maeda had a new mini crane in the design stage and were willing to take me to Japan to visually inspect the machine. After seeing the MK3053C in its design and testing stages, I instantly knew this was the crane we needed," said Digger.

"The engineering behind the new concept knuckle boom was impressive, and witnessing its rigorous testing gave me confidence in its performance and safety. While I know that Maeda isn't the first or the original concept designer of this type of machine, what truly matters to me is the relationship I have with Pace Cranes and Maeda. Over the years, I've built a solid trust in their advice and the quality of their equipment. It's not just about the specs; it's about knowing I can rely on them for support and that I'll get a machine that meets my business needs,

"The new concept detachable telescopic jib on the MK3053C makes it a standout choice, especially for handling heavy loads in confined indoor spaces or tight outdoor areas. Its compact design allows us to maneuver

at what particular angle, so it features very smart technology," he said.

Haden Roper's Cranes 4 Hire specializes in glass lifting and handling and purchased his first Maeda almost six years ago.

"I'd been operating Maedas previously and that's before they had LMIs, but the 285 is where we it all started for us. We run two Maedas and went with their brand for reliability, and over the last six years, reliability is what we've experienced," said Haden.

Hayden has been waiting for the MK3053C for sometime.

"I enquired about this crane before we bought our 305. I've been chasing a crane that's skinnier, smaller and lighter with more lifting capacity, and Maeda have managed this with the MK3053C.

"It's one tonne less in weight than the 305, half a meter skinnier and yet features 17m of reach, which is going to be handy. It has a good chart out to nine meters radius, so it's going to be a very handy lifter in the domestic market.

"There are a few things coming up for the Australian Open, which require battery powered machine, and this has already been specified so we can now help them out with this crane, which is good," said Hayden.

"Battery powered equipment is the

way everything's going moving forward and Maeda is offering this option across the range. Government projects are specifying zero emissions and so the MK3053C ticks all their boxes. It's also going to be nicer not having to listen to a motor humming all day," he said..

The knuckle boom will provide more versatility when it comes to projects says Hayden.

"Government projects are specifying zero emissions and so the MK3053C ticks all their boxes. It's also going to be nicer not having to listen to a motor humming all day."

"Currently we use a truck crane for a lot of our glass installations, and that's features the knuckle boom which helps us get inside the building a lot further, which is important when we are working with glass. With the MK3053C we can now go up and push inside which is going to be a game changer for us, the mini crawler crane market and for Maeda," said Hayden.

Digger Misner from Canberra's Capital Cranes also took delivery of the new Maeda's MK3053C. "When a customer asked if there was a machine that could handle some tough requirements, I reached out to Pace

through standard doorways and operate in spaces where larger cranes just can't fit. Whether we're lifting inside a gallery or working in a narrow outdoor location, this crane provides the flexibility and control we need," said Digger.

"Being fully battery-powered and featuring non-marking tracks, makes it ideal for sensitive environments where we want to avoid any damage. In the end, it's about choosing a machine backed by a trusted relationship. That's why I'm confident that the MK3053C will be a valuable addition to our fleet," he said. ●